



UNIFAP

COMUTADORES DE IGNIÇÃO
Ignition Switches



2024

UNIFAP.com.br



QUEM SOMOS NÓS?

WHO ARE WE?

Fundada em 1º de abril de 1992 pelos irmãos Ivo e Nelson Bittencourt, a UNIFAP INDÚSTRIA E COMÉRCIO DE AUTO PEÇAS LTDA deu início às suas atividades com o objetivo de atuar e ser referência no ramo de peças automotivas, baseada em princípios sólidos, valorizando a ética e a seriedade.

Fiel a estes ideais, a empresa cresce constantemente e conta hoje com 10.627,6 m² de área construída, em uma área disponível de 346.000 m² e aproximadamente 100 colaboradores. Localizada ao sul do país, na cidade de Gaspar (SC), a empresa possui uma das maiores linhas do segmento, o que a coloca entre as principais do setor automotivo no país, e com exportações para mais de 20 países.

Founded on April 1st, 1992, by brothers Ivo and Nelson Bittencourt, UNIFAP INDÚSTRIA E COMÉRCIO DE AUTO PEÇAS LTDA started its activities with the aim of acting and being a reference in the automotive parts business, based on solid principles, valuing ethics and integrity.

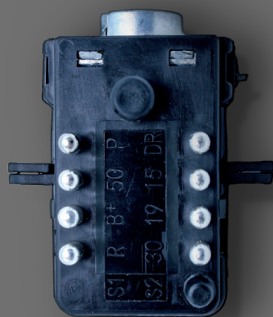
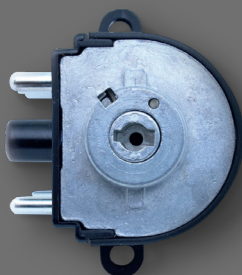
Faithful to these ideals, the company constantly grows and now has 10.627,6 m² of built-up area, an available area of 346,000 m² and approximately 100 employees. Located in the south of Brazil, in the city of Gaspar, state of Santa Catarina, the company has one of the largest lines of the segment, which puts it among the main automotive sector companies in the country, exporting to more than 20 countries.



UNIFAP.com.br

LINHA DE COMUTADORES DE IGNIÇÃO

IGNITION SWITCHES LINE



- Nossos produtos são projetados e fabricados para substituir integralmente o equipamento original, dispensando adaptações. (sistema "Plug and play")
- They are designed and manufactured to fully replace the original equipment, plug and play.
- Todas as funções de comutação mecânica e elétrica são testadas ao final do processo produtivo.
- All mechanical and electrical switching functions are tested at the end of the production process.
- Nossos produtos contêm índice de cobre equiparado ao produto original, o que proporciona condutividade elétrica apropriada, livre de problemas de resistividade.
- Our products contain a copper level equivalent to the original product, which provides appropriate electrical conductivity, free from resistivity issues.



Acesse o QR Code para solicitar seu catálogo impresso de componentes para arranques e alternadores agora mesmo.

Access the QR Code to request your printed starter and alternator components catalog right now.



TABELAS DE EQUIVALÊNCIAS DE NÚMEROS ORIGINAIS

Cross Reference - Original Numbers

LINHA LEVE

light line

Cod. Unifap Cod. Unifap	Cod. Original Cod. Original	Pg.
Chevrolet		
55.019	90052497	4
55.030	94654276	4
55.041	90052498	4
55.048	93271731 / 90052497	4
55.054	90505912	5
55.055	90589314	5
55.059	93280293	5
55.069	90389377	5
55.076	9115863	6
55.077	94705794	6
55.098	20965947	6
55.099	20939745	6
55.100	94737994	7
55.107	8972370	7
Daewoo / Chery		
55.101	530395	7
Fiat		
55.018	5888988	7
55.044	46543405	8
55.046	97611038	8
55.056	7077415	8
55.057	97608141	8
55.072	46806589	9
55.073	46760152	9
55.092	7078472	9
55.105	7522791	9
Ford		
55.011	85NU.11572.A	10
55.012	82ZU.11572.A	10
55.013	80NU.11572.A	10
55.014	78.MU.11572.A	10
55.035	86AU.11572.A / 542.905865	11
55.037	81AB.11572.BB	11
55.040	547905865	11
55.042	89FB.11572.AB / 2S65.11572.AA	11
55.071	95AB.11572.AA	12
55.085	AA6T.11572.AA / 98AB.11572.BG / 1363940	12
55.093	E3B5 3677 A / E3B5 A22050	12
Hyundai / Kia		
55.082	93110.2D000	12
Jeep		
55.106	04685719AI	13
Mitsubishi		
55.094	MR449457	13
55.095	MR992562 / MB903639	13
55.096	MR123396	13

LINHA LEVE

light line

Cod. Unifap Cod. Unifap	Cod. Original Cod. Original	Pg.
Mitsubishi		
55.097	MB.894.755-CE	14
Peugeot / Citroen		
55.066	4162P0	14
Peugeot		
55.067	400-9000 B	14
55.075	4162.RX	14
Renault		
55.060	7701469773	15
55.061	7701471098 / 6001550798	15
55.062	7702295140	15
55.065	7700766093	15
Toyota		
55.086	84450-0D020	16
55.087	84450-35130	16
55.088	84450-0K010 / 84450-06010	16
55.089	84450-02020	16
55.090	84450-12200	17
55.091	8445002030	17
Volkswagen		
55.010	111.905865.1	17
55.016	102.905865.1	17
55.021	9401104	18
55.029	ZBA.953849.B	18
55.051	377905865	18
55.053	6NO.905865	18
55.070	377.905865.2	19
55.079	6R0.905865	19
55.080	90052497	19
55.081	6NO.905865.1	19
55.084	1KO.905865.A	20

LEVE / UTILITÁRIO / PESADO

light / utility / heavy

Cod. Unifap Cod. Unifap	Cod. Original Cod. Original	Pg.
Chevrolet		
55.026	93364302	20
Fiat		
55.045	5888983	20
Ford		
55.015	BE2M.11572.A	20
55.017	C5AB.11572.C	21
Iveco		
55.108	29.925.51 - CE	21

LEVE / UTILITÁRIO / PESADO

light / utility / heavy

Cod. Unifap Cod. Unifap	Cod. Original Cod. Original	Pg.
Mercedes Benz		
55.028	A.000.545.81.08	21
55.058	631.545.00.13	21
Peugeot		
55.068	400-9000B / 4162.AP	22
55.102	1329316080	22
Renault		
55.063	7702073688	22
55.064	VALEO 41022	22
Toyota		
55.032	45280-98000	23
Volkswagen		
55.023	211.905865.3	23
55.033	307.905865.1 / 88EU.11572.A.B1	23
55.047	1111905865 / 3079058651 / 88EU11572AB1	23
55.052	307.905865.2	24
55.074	4B0.905849	24

LINHA PESADA

heavy line

Cod. Unifap Cod. Unifap	Cod. Original Cod. Original	Pg.
Mercedes Benz		
55.027	A.979.540.00.78	24
55.036	000.545.54.13	24
55.038	345.545.73.13	25
55.039	688.545.70.13	25
55.043	000.545.58.13	25
55.049	A.688.545.70.13	25
55.050	A.000.545.58.13	26
55.083	000.545.95.08	26
55.103	A.345.545.72.13	26
55.104	A.000.545.54.13	26
Scania		
55.024	9401107	27
55.025	1425019	27
55.031	537326	27
Volkswagen		
55.034	2RP.905865	27
Volvo		
55.020	1626372	28
55.022	8159904	28
55.078	3197718	28

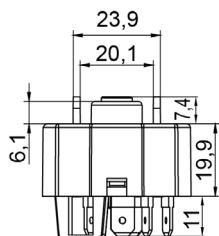
ÍNDICE POR CÓDIGO

index by code

Cod. Unifap Cod. Unifap	Pg.	Cod. Original Cod. Original	Montadora Automaker
55.010	17	111.905865.1	Volkswagen
55.011	10	85NU.11572.A	Ford
55.012	10	82ZU.11572.A	Ford
55.013	10	80NU.11572.A	Ford
55.014	10	78.MU.11572.A	Ford
55.015	20	BE2M.11572.A	Ford
55.016	17	102.905865.1	Volkswagen
55.017	21	C5AB.11572.C	Ford
55.018	7	5888988	Fiat
55.019	4	90052497	Chevrolet
55.020	28	1626372	Volvo
55.021	18	9401104	Volkswagen
55.022	28	8159904	Volvo
55.023	23	211.905865.3	Volkswagen
55.024	27	9401107	Scania
55.025	27	1425019	Scania
55.026	20	93364302	Chevrolet
55.027	24	A.979.540.00.78	Mercedes Benz
55.028	21	A.000.545.81.08	Mercedes Benz
55.029	18	ZBA.953849.B	Volkswagen
55.030	4	94654276	Chevrolet
55.031	27	537326	Scania
55.032	23	45280-98000	Toyota
55.033	23	307.905865.1 / 88EU.11572.A.B1	Volkswagen
55.034	27	2RP.905865	Volkswagen
55.035	11	86AU.11572.A / 542.905865	Ford
55.036	24	000.545.54.13	Mercedes Benz
55.037	11	81AB.11572.BB	Ford
55.038	25	345.545.73.13	Mercedes Benz
55.039	25	688.545.70.13	Mercedes Benz
55.040	11	547905865	Ford
55.041	4	90052498	Chevrolet
55.042	11	89FB.11572.AB / 2S65.11572.AA	Ford
55.043	25	000.545.58.13	Mercedes Benz
55.044	8	46543405	Fiat
55.045	20	5888983	Fiat
55.046	8	97611038	Fiat
55.047	23	1111905865 / 3079058651 / 88EU11572AB1	Volkswagen
55.048	4	93271731 / 90052497	Chevrolet
55.049	25	A.688.545.70.13	Mercedes Benz
55.050	26	A.000.545.58.13	Mercedes Benz
55.051	18	377905865	Volkswagen
55.052	24	307.905865.2	Volkswagen
55.053	18	6N0.905865	Volkswagen
55.054	5	90505912	Chevrolet
55.055	5	90589314	Chevrolet
55.056	8	7077415	Fiat
55.057	8	97608141	Fiat
55.058	21	631.545.00.13	Mercedes Benz
55.059	5	93280293	Chevrolet

Cod. Unifap Cod. Unifap	Pg.	Cod. Original Cod. Original	Montadora Automaker
55.060	15	7701469773	Renaut
55.061	15	7701471098 / 6001550798	Renaut
55.062	15	7702295140	Renaut
55.063	22	7702073688	Renaut
55.064	22	VALEO 41022	Renaut
55.065	15	7700766093	Renaut
55.066	14	4162P0	Peugeot
55.067	14	400-9000 B	Peugeot
55.068	22	400-9000B / 4162.AP	Peugeot
55.069	5	90389377	Chevrolet
55.070	19	377.905865.2	Volkswagen
55.071	12	95AB.11572.AA	Ford
55.072	9	46806589	Fiat
55.073	9	46760152	Fiat
55.074	24	4B0.905849	Volkswagen
55.075	14	4162.RX	Peugeot
55.076	6	9115863	Chevrolet
55.077	6	94705794	Chevrolet
55.078	28	3197718	Volvo
55.079	19	6R0.905865	Volkswagen
55.080	19	90052497	Volkswagen
55.081	19	6NO.905865.1	Volkswagen
55.082	12	93110.2D000	Hyundai
55.083	26	000.545.95.08	Mercedes Benz
55.084	20	1KO.905865.A	Volkswagen
55.085	12	AA6T.11572.AA / 98AB.11572.BG / 1363940	Ford
55.086	16	84450-0D020	Toyota
55.087	16	84450-35130	Toyota
55.088	16	84450-0K010 / 84450-06010	Toyota
55.089	16	84450-02020	Toyota
55.090	17	84450-12200	Toyota
55.091	17	8445002030	Toyota
55.092	9	7078472	Fiat
55.093	12	E3B5 3677 A / E3B5 A22050	Ford
55.094	13	MR449457	Mitsubishi
55.095	13	MR992562 / MB903639	Mitsubishi
55.096	13	MR123396	Mitsubishi
55.097	14	MB.894.755-CE	Mitsubishi
55.098	6	20965947	Chevrolet
55.099	6	20939745	Chevrolet
55.100	7	94737994	Chevrolet
55.101	7	530395	Daewoo
55.102	22	1329316080	Peugeot
55.103	26	A.345.545.72.13	Mercedes Benz
55.104	26	A.000.545.54.13	Mercedes Benz
55.105	9	7522791	Fiat
55.106	13	04685719AI	Jeep
55.107	7	8972370	Chevrolet
55.108	21	29.925.51 - CE	Iveco

COMUTADOR DE IGNIÇÃO
Ignition Switch



UNIFAP
55.019

Original: 90052497
OEM Part number:

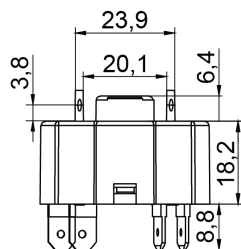
Aplicação: **CHEVROLET**
Application



- Vectra 1994 -1996
- Calibra 1994 -1996
- Kadett 1989 ->
- Monza
- Ipanema 1989 ->
- Corsa Classic/hatch/pick-up <- 2004



COMUTADOR DE IGNIÇÃO
Ignition Switch



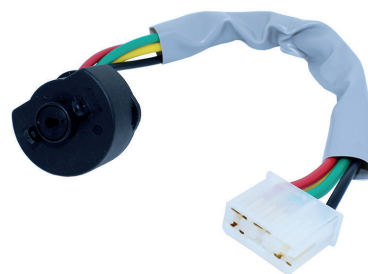
UNIFAP
55.030

Original: 94654276
OEM Part number:

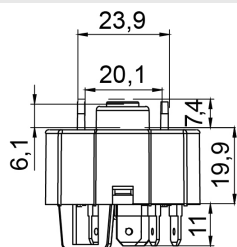
Aplicação: **CHEVROLET**
Application



- Chevette
- Marajó
- Chevy 1987 ->



COMUTADOR DE IGNIÇÃO
Ignition Switch



UNIFAP
55.041

Original: 90052498
OEM Part number:

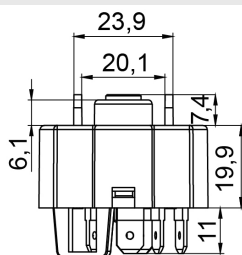
Aplicação: **CHEVROLET**
Application



- Monza <- 1988
- Kadet 1989 ->
- Ipanema 1989 ->
- Corsa Classic 1994-2004



COMUTADOR DE IGNIÇÃO
Ignition Switch



UNIFAP
55.048

Original: 93271731, 90052497
OEM Part number:

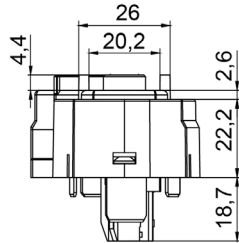
Aplicação: **CHEVROLET**
Application



- Omega Suprema
- D20



COMUTADOR DE IGNIÇÃO
Ignition Switch



UNIFAP

55.054

Original: 90505912

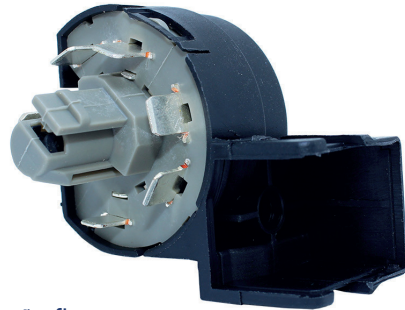
OEM Part number:

Aplicação: **CHEVROLET**

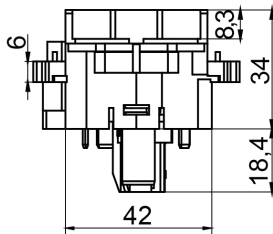
Application



- Vectra 1997-2005
- Tigra 1998-1999
- Astra 1995-1998 direção fixa



COMUTADOR DE IGNIÇÃO
Ignition Switch



UNIFAP

55.055

Original: 90589314

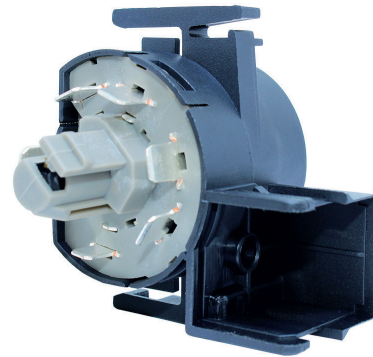
OEM Part number:

Aplicação: **CHEVROLET**

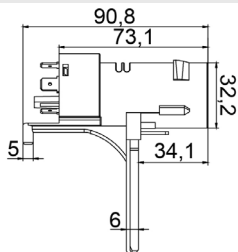
Application



- Astra 1999 ->
- Corsa 2004 ->
- Zafira



COMUTADOR DE IGNIÇÃO
Ignition Switch



UNIFAP

55.059

Original: 93280293

OEM Part number:

Aplicação: **CHEVROLET**

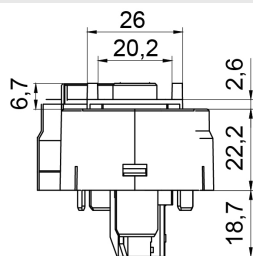
Application



- Celta
- Prisma
- Corsa Classic



COMUTADOR DE IGNIÇÃO
Ignition Switch



UNIFAP

55.069

Original: 90389377

OEM Part number:

Aplicação: **CHEVROLET**

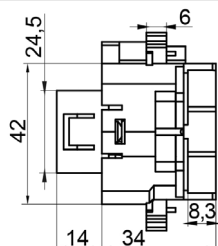
Application



- Vectra
- Astra



COMUTADOR DE IGNIÇÃO
Ignition Switch



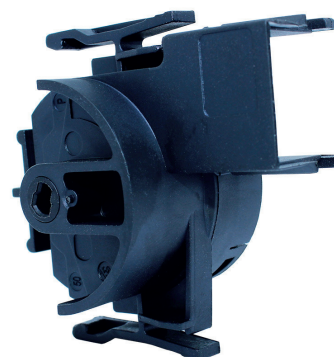
UNIFAP
55.076

Original: 9115863
OEM Part number:

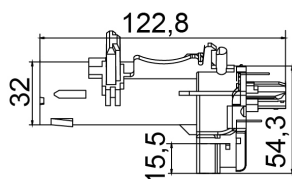
Aplicação: **CHEVROLET**
Application



- Meriva
- Corsa 2002 ->
- Montana <- 2010



COMUTADOR DE IGNIÇÃO
Ignition Switch



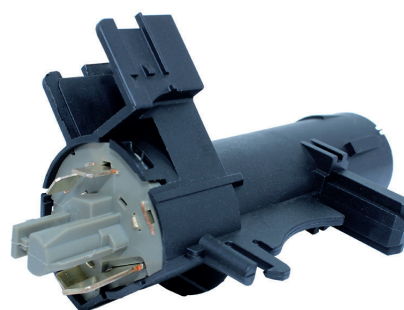
UNIFAP
55.077

Original: 94705794
OEM Part number:

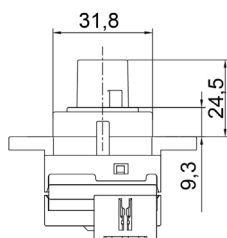
Aplicação: **CHEVROLET**
Application



- Agile
- Montana 2010 ->



COMUTADOR DE IGNIÇÃO
Ignition Switch



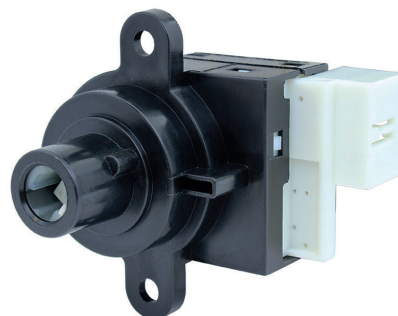
UNIFAP
55.098

Original: 20965947
OEM Part number:

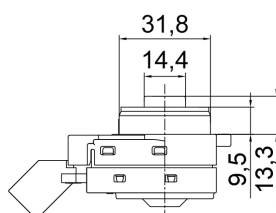
Aplicação: **CHEVROLET**
Application



- S-10 2012 ->
- Trailblazer 2012 ->



COMUTADOR DE IGNIÇÃO
Ignition Switch



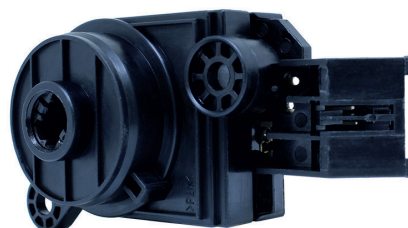
UNIFAP
55.099

Original: 20939745
OEM Part number:

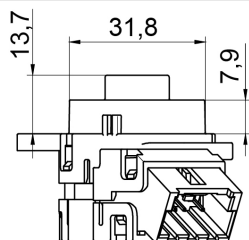
Aplicação: **CHEVROLET**
Application



- Sonic 2012-2014
- Cruze Hatch 2012-2016
- Cruze Sedan 2011-2016



COMUTADOR DE IGNIÇÃO
Ignition Switch



UNIFAP

55.100

Original: 94737994

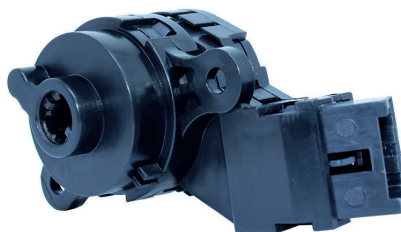
OEM Part number:

Aplicação: **CHEVROLET**

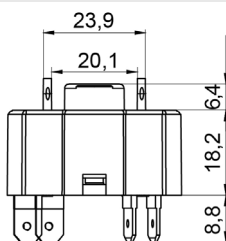
Application



- Cobalt 2011 ->
- Onix 2012 ->
- Prisma 2013 ->



COMUTADOR DE IGNIÇÃO
Ignition Switch



UNIFAP

55.107

Original: 8972370

OEM Part number:

Aplicação: **CHEVROLET**

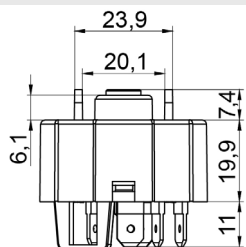
Application



- Chevette
- Marajó 1986 ->



COMUTADOR DE IGNIÇÃO
Ignition Switch



UNIFAP

55.101

Original: 530395

OEM Part number:

Aplicação: **DAEWOO/CHERY**

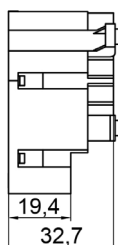
Application



- Daihatsu
- Espero
- Cielo



COMUTADOR DE IGNIÇÃO
Ignition Switch



UNIFAP

55.018

Original: 5888988

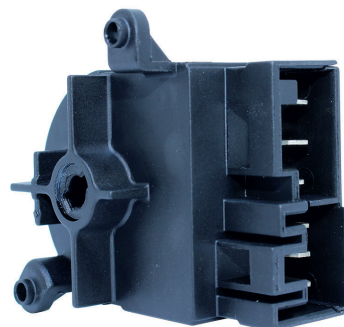
OEM Part number:

Aplicação: **FIAT**

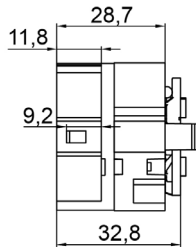
Application



- Tipo



COMUTADOR DE IGNIÇÃO
Ignition Switch



UNIFAP

55.044

Original: 46543405

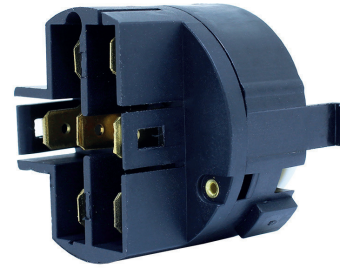
OEM Part number:

Aplicação: **FIAT**

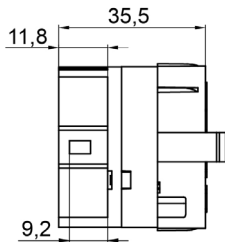
Application



- Siena
- Marea
- Brava
- Fiorino 2002 ->
- Palio Weekend
- Strada 1996-2003



COMUTADOR DE IGNIÇÃO
Ignition Switch



UNIFAP

55.046

Original: 97611038

OEM Part number:

Aplicação: **FIAT**

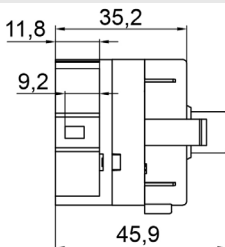
Application



- Tempra 1992-1999
- Uno 1991-2001
- Fiorino 1991-2001



COMUTADOR DE IGNIÇÃO
Ignition Switch



UNIFAP

55.056

Original: 7077415

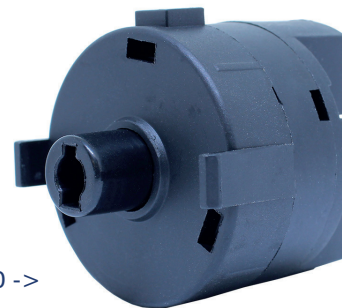
OEM Part number:

Aplicação: **FIAT**

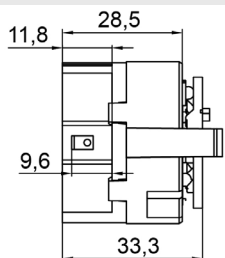
Application



- Uno
- Elba
- Prêmio
- Fiorino 1990 ->



COMUTADOR DE IGNIÇÃO
Ignition Switch



UNIFAP

55.057

Original: 97608141

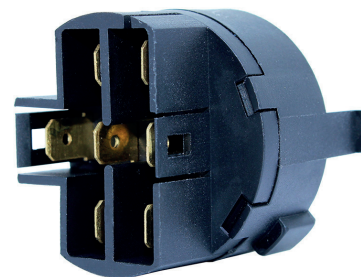
OEM Part number:

Aplicação: **FIAT**

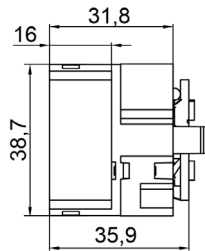
Application



- Uno
- Elba
- Prêmio
- Fiorino



COMUTADOR DE IGNIÇÃO
Ignition Switch



UNIFAP

55.072

Original: 46806589

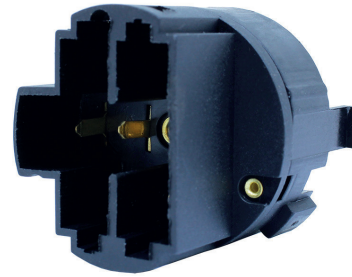
OEM Part number:

Aplicação: **FIAT**

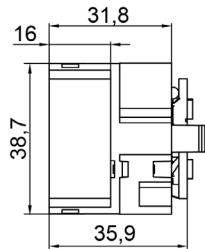
Application



- Siena
- Idea
- Doblô
- Palio
- Palio Weekend
- Strada 2001 ->
- Fiorino 2006-2013



COMUTADOR DE IGNIÇÃO
Ignition Switch



UNIFAP

55.073

Original: 46760152

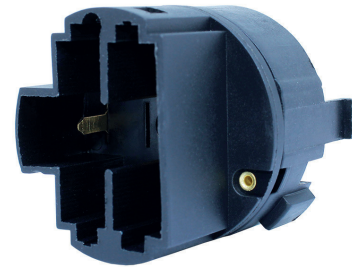
OEM Part number:

Aplicação: **FIAT**

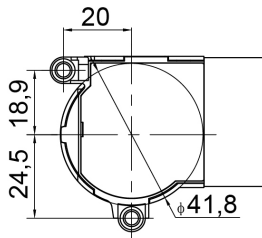
Application



- Stilo
- Bravo



COMUTADOR DE IGNIÇÃO
Ignition Switch



UNIFAP

55.092

Original: 7078472

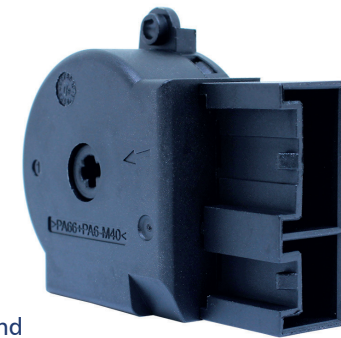
OEM Part number:

Aplicação: **FIAT**

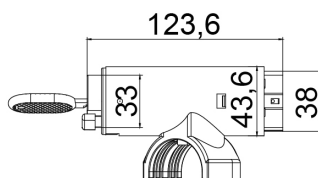
Application



- Argo
- Linea
- Punto
- Toro
- Palio
- Palio Weekend



COMUTADOR DE IGNIÇÃO
Ignition Switch



UNIFAP

55.105

Original: 7522791

OEM Part number:

Aplicação: **FIAT**

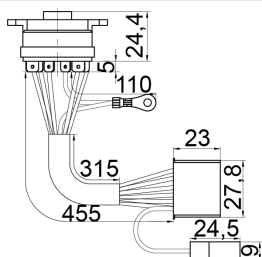
Application



- Uno
- Pick-up
- Furgão
- Prêmio
- Elba
- Fiorino 2003 ->



COMUTADOR DE IGNIÇÃO
Ignition Switch



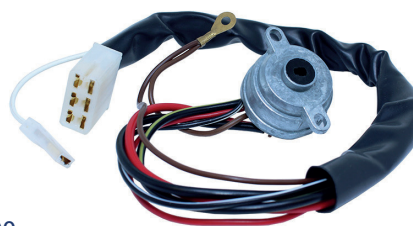
UNIFAP
55.011

Original: 85NU.11572.A
OEM Part number:

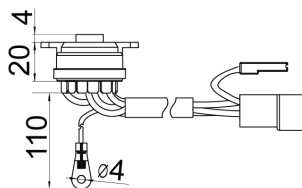
Aplicação: **FORD**
Application



- Del Rey
- Scala
- Pampa
- F1000
- F11000 1986-1992



COMUTADOR DE IGNIÇÃO
Ignition Switch



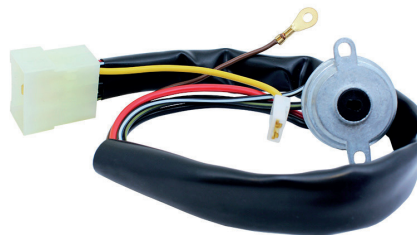
UNIFAP
55.012

Original: 82ZU.11572.A
OEM Part number:

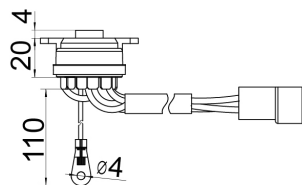
Aplicação: **FORD**
Application



- Corcel 1985-1986
- Belina 1985-1986



COMUTADOR DE IGNIÇÃO
Ignition Switch



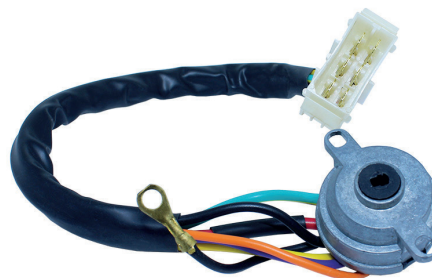
UNIFAP
55.013

Original: 80NU.11572.A
OEM Part number:

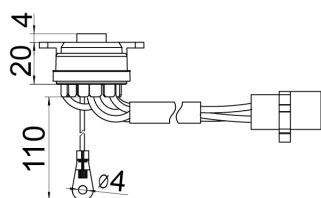
Aplicação: **FORD**
Application



- Corcel
- Belina
- Del Rey



COMUTADOR DE IGNIÇÃO
Ignition Switch



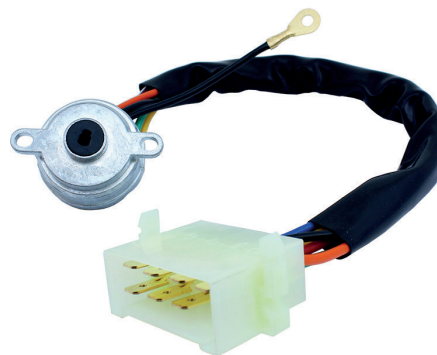
UNIFAP
55.014

Original: 78.MU.11572.A
OEM Part number:

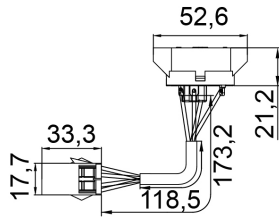
Aplicação: **FORD**
Application



- Belina
- Corcel
- Del Rey



COMUTADOR DE IGNIÇÃO
Ignition Switch



UNIFAP

55.035

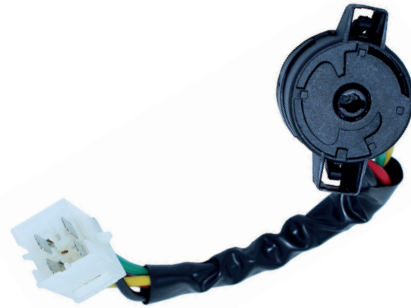
Original: 86AU.11572.A,
OEM Part number: 542.905865

Aplicação: **FORD**

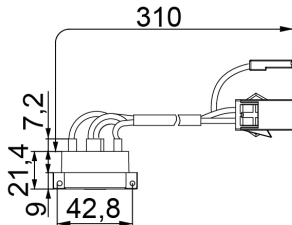
Application



- Escort 1987-1992
- Verona 1990-1992
- Apollo 1990-1992



COMUTADOR DE IGNIÇÃO
Ignition Switch



UNIFAP

55.037

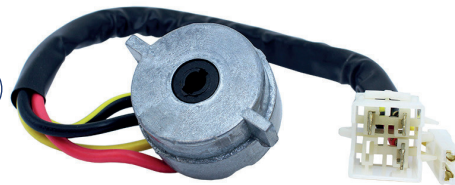
Original: 81AB.11572.BB
OEM Part number:

Aplicação: **FORD**

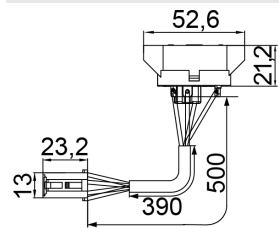
Application



- Escort <- 1985



COMUTADOR DE IGNIÇÃO
Ignition Switch



UNIFAP

55.040

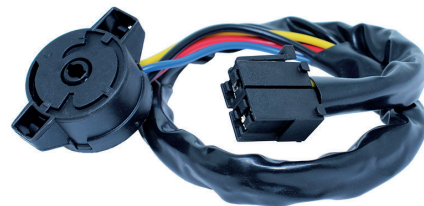
Original: 547905865
OEM Part number:

Aplicação: **FORD**

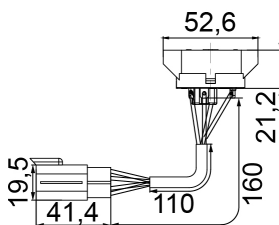
Application



- Escort
- Pointer
- Logus
- Verona 1993-1996



COMUTADOR DE IGNIÇÃO
Ignition Switch



UNIFAP

55.042

Original: 89FB.11572.AB,
OEM Part number: 2S65.11572.AA

Aplicação: **FORD**

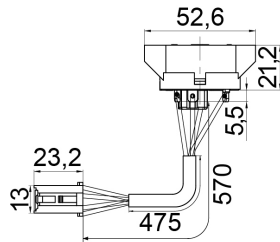
Application



- Ka
- Fiesta
- Courier <- 2007
- Ecosport <- 2012



COMUTADOR DE IGNIÇÃO
Ignition Switch



UNIFAP

55.071

Original: 95AB.11572.AA

OEM Part number:

Aplicação: **FORD**

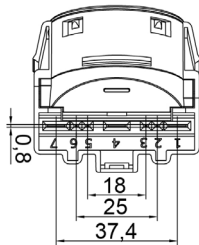
Application



- Escort 1997 ->



COMUTADOR DE IGNIÇÃO
Ignition Switch



UNIFAP

55.085

Original: 1363940, AA6T.11572.AA,
98AB.11572.BG

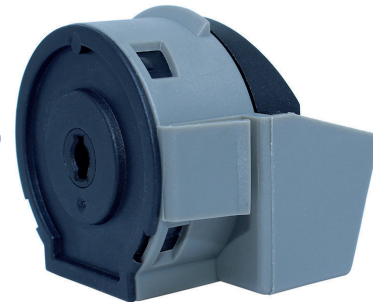
OEM Part number:

Aplicação: **FORD**

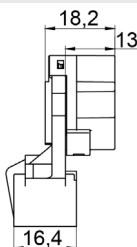
Application



- EcoSport
- New Fiesta
- Focus



COMUTADOR DE IGNIÇÃO
Ignition Switch



UNIFAP

55.093

Original: E3B5 3677 A,
E3B5 A22050

OEM Part number:

Aplicação: **FORD**

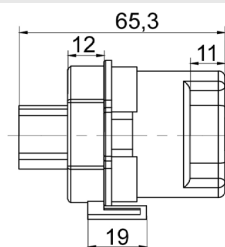
Application



- Ford Ka 2014 ->



COMUTADOR DE IGNIÇÃO
Ignition Switch



UNIFAP

55.082

Original: 93110.2D000

OEM Part number:

Aplicação: **HYUNDAI/KIA**

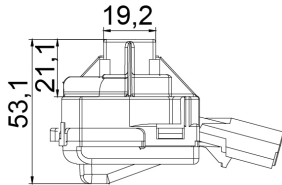
Application



- Tucson
- Sportage
- Sorento
- Azera 2007-2011



COMUTADOR DE IGNIÇÃO
Ignition Switch



UNIFAP

55.106

Original: 04685719AI

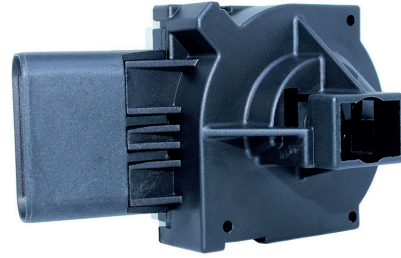
OEM Part number:

Aplicação: **JEEP**

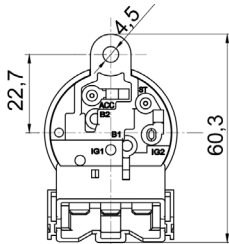
Application



- Wrangler 2007-2018
- Compass 2007-2018
- Grand Cherokee 2005-2007
- Liberty 2008-2012
- Chrysler 300C 2005-2007
- Chrysler Cruiser 2006-2010



COMUTADOR DE IGNIÇÃO
Ignition Switch



UNIFAP

55.094

Original: MR449457

OEM Part number:

Aplicação: **MITSUBISHI**

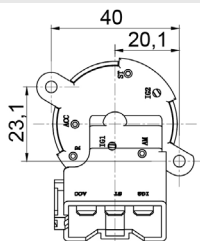
Application



- Pajero TR4



COMUTADOR DE IGNIÇÃO
Ignition Switch



UNIFAP

55.095

Original: MR992562,

OEM Part number:

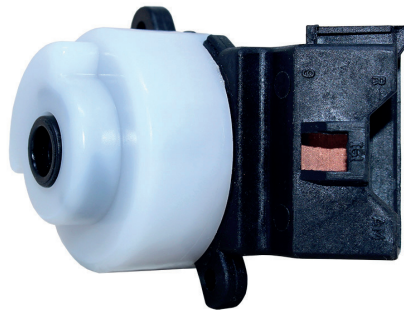
MB903639

Aplicação: **MITSUBISHI**

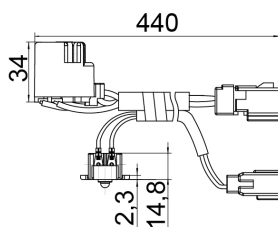
Application



- L200



COMUTADOR DE IGNIÇÃO
Ignition Switch



UNIFAP

55.096

Original: MR123396

OEM Part number:

Aplicação: **MITSUBISHI**

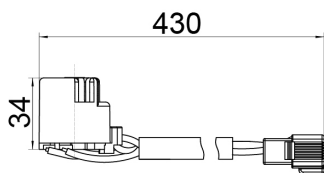
Application



- Pajero 1998-2011



COMUTADOR DE IGNIÇÃO
Ignition Switch



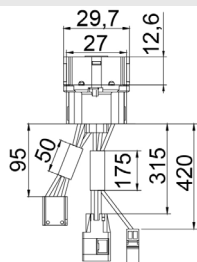
UNIFAP
55.097

Original: MB.894.755-CE
OEM Part number:

Aplicação: **MITSUBISHI**
Application
• L200 <- 2006



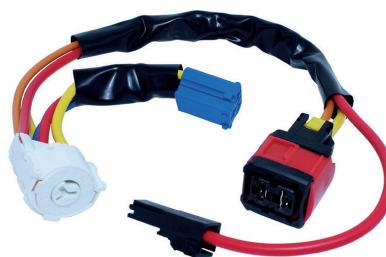
COMUTADOR DE IGNIÇÃO
Ignition Switch



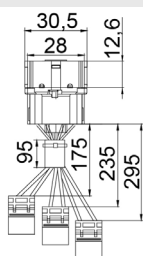
UNIFAP
55.066

Original: 4162P0
OEM Part number:

Aplicação: **PEUGEOT/CITROEN**
Application
• 206 <-2002
• Picasso



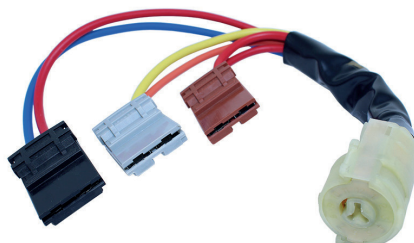
COMUTADOR DE IGNIÇÃO
Ignition Switch



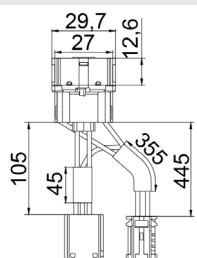
UNIFAP
55.067

Original: 400.9000B
OEM Part number:

Aplicação: **PEUGEOT**
Application
• 106
• 306
• 405



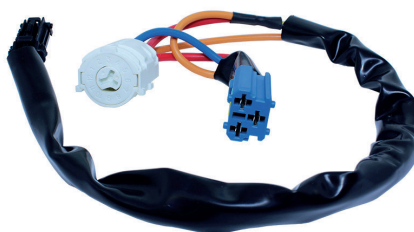
COMUTADOR DE IGNIÇÃO
Ignition Switch



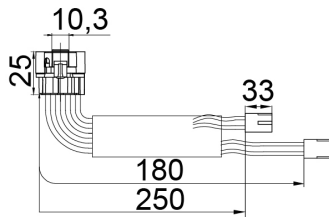
UNIFAP
55.075

Original: 4162.RX
OEM Part number:

Aplicação: **PEUGEOT**
Application
• 206 2002 ->
• 207
• Hoggar



COMUTADOR DE IGNIÇÃO
Ignition Switch



UNIFAP

55.060

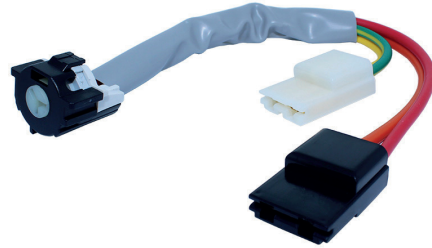
Original: 7701469773

OEM Part number: *cilindro de chave não incluso / ignition barrel not included

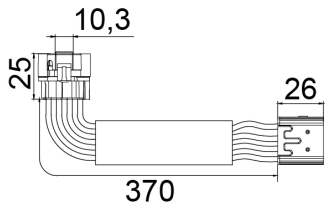
Aplicação: **RENAULT**

Application

- Clio <- 1999
- R19



COMUTADOR DE IGNIÇÃO
Ignition Switch



UNIFAP

55.061

Original: 7701471098,

OEM Part number: 6001550798

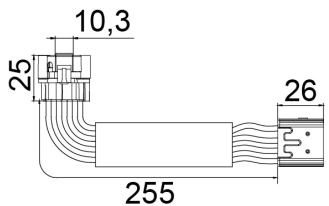
Aplicação: **RENAULT**

Application

- Clio
- Sandero
- Logan



COMUTADOR DE IGNIÇÃO
Ignition Switch



UNIFAP

55.062

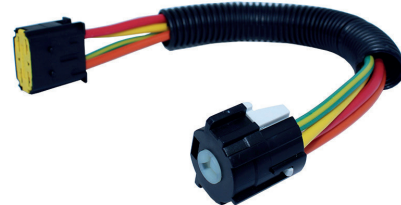
Original: 7702295140

OEM Part number:

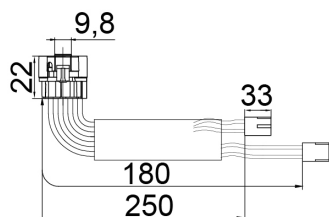
Aplicação: **RENAULT**

Application

- Mégane
- Scenic



COMUTADOR DE IGNIÇÃO
Ignition Switch



UNIFAP

55.065

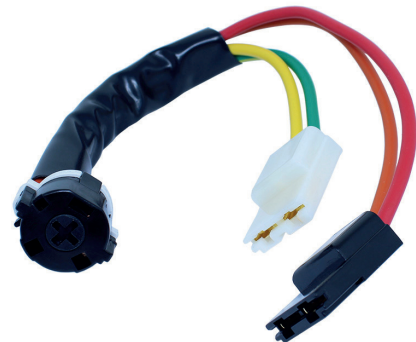
Original: 7700766093

OEM Part number:

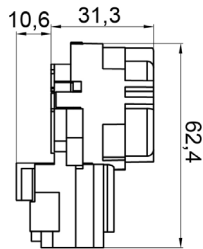
Aplicação: **RENAULT**

Application

- R21



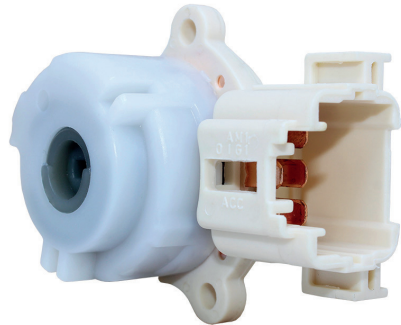
COMUTADOR DE IGNIÇÃO
Ignition Switch



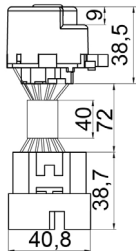
UNIFAP
55.086

Original: 84450-0D020
OEM Part number:

Aplicação: **TOYOTA**
Application
• Etios <- 2018



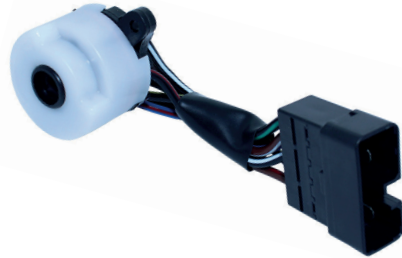
COMUTADOR DE IGNIÇÃO
Ignition Switch



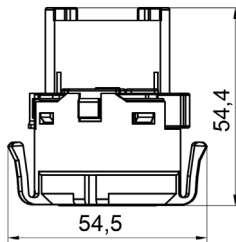
UNIFAP
55.087

Original: 84450-35130
OEM Part number:

Aplicação: **TOYOTA**
Application
• Hilux 2001-2004



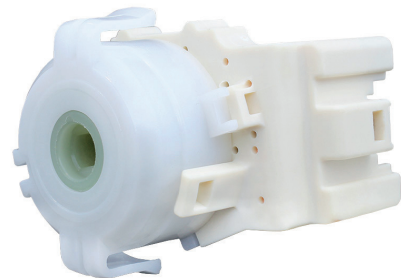
COMUTADOR DE IGNIÇÃO
Ignition Switch



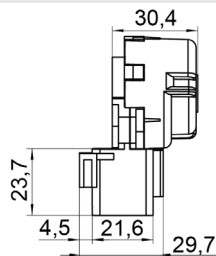
UNIFAP
55.088

Original: 84450-0K010,
OEM Part number: 84450-06010

Aplicação: **TOYOTA**
Application
• Hilux 2005-2012



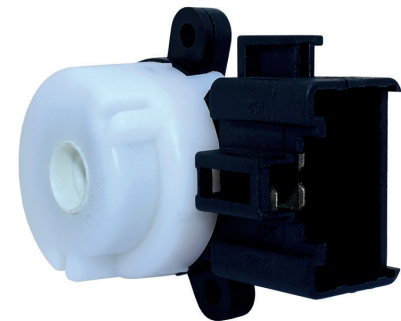
COMUTADOR DE IGNIÇÃO
Ignition Switch



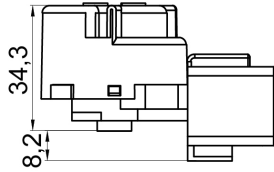
UNIFAP
55.089

Original: 84450-02020
OEM Part number:

Aplicação: **TOYOTA**
Application
• Corolla 2002-2008



COMUTADOR DE IGNIÇÃO
Ignition Switch

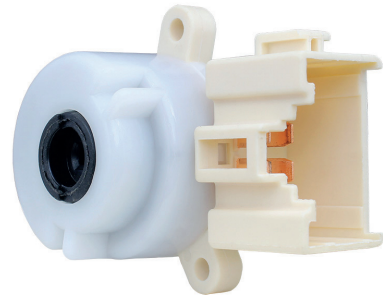


UNIFAP
55.090

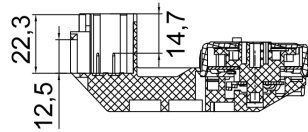
Original: 84450-12200
OEM Part number:

Aplicação: **TOYOTA**
Application

- Corolla 2008-2014



COMUTADOR DE IGNIÇÃO
Ignition Switch

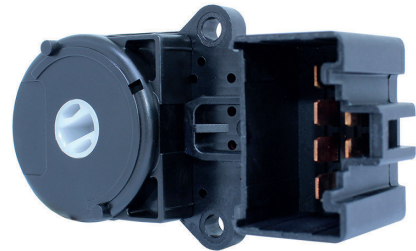


UNIFAP
55.091

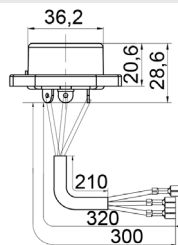
Original: 8445002030
OEM Part number:

Aplicação: **TOYOTA**
Application

- Corolla 2014 ->



COMUTADOR DE IGNIÇÃO
Ignition Switch



UNIFAP
55.010

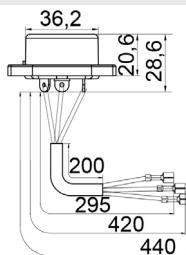
Original: 111.905865.1
OEM Part number:

Aplicação: **VOLKSWAGEN**
Application

- Sedan
- Fusca
- Kombi



COMUTADOR DE IGNIÇÃO
Ignition Switch

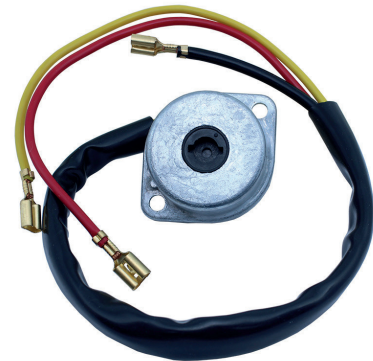


UNIFAP
55.016

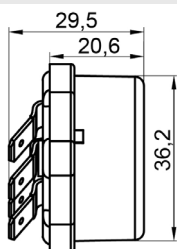
Original: 102.905865.1
OEM Part number:

Aplicação: **VOLKSWAGEN**
Application

- Brasilia
- Variant
- TL
- TC



COMUTADOR DE IGNIÇÃO
Ignition Switch



UNIFAP
55.021

Original: 9401104
OEM Part number:

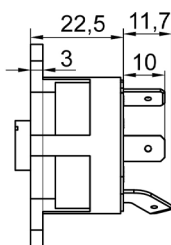
Aplicação: **VOLKSWAGEN**
Application



- Gol
- Parati
- Saveiro
- Voyage <- 1984
- Passat 1978-1981



COMUTADOR DE IGNIÇÃO
Ignition Switch



UNIFAP
55.029

Original: ZBA.953849.B
OEM Part number:

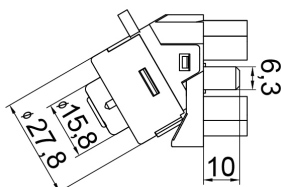
Aplicação: **VOLKSWAGEN**
Application



- Gol
- Parati
- Saveiro
- Voyage 1984-1987
- Passat 1981 ->



COMUTADOR DE IGNIÇÃO
Ignition Switch



UNIFAP
55.051

Original: 377905865
OEM Part number:

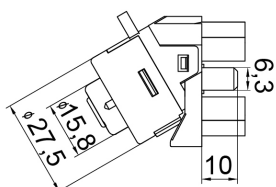
Aplicação: **VOLKSWAGEN**
Application



- Gol
- Saveiro 1996-2007
- Parati 1995 ->



COMUTADOR DE IGNIÇÃO
Ignition Switch



UNIFAP
55.053

Original: 6N0.905865
OEM Part number:

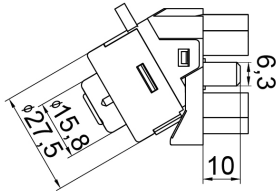
Aplicação: **VOLKSWAGEN/SEAT/FIAT**
Application



- Polo 1996-2001
- Golf <- 1998
- Variant 1994-1997
- Passat
- Cordoba
- Ibiza 1995 ->
- Furgão 1998 ->



COMUTADOR DE IGNIÇÃO
Ignition Switch



UNIFAP

55.070

Original: 377.905865.2

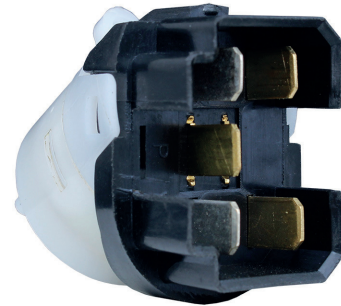
OEM Part number:

Aplicação: **VOLKSWAGEN**

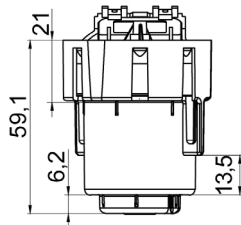
Application



- Gol
- Saveiro



COMUTADOR DE IGNIÇÃO
Ignition Switch



UNIFAP

55.079

Original: 6R0.905865

OEM Part number:

Aplicação: **VOLKSWAGEN**

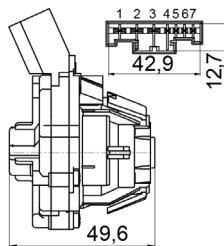
Application



- Gol
- Saveiro
- Voyage 2013 ->
- Up!
- Fox
- CrossFox
- SpaceFox
- Space Cross 2012 ->
- Amarok



COMUTADOR DE IGNIÇÃO
Ignition Switch



UNIFAP

55.080

Original: 90052497

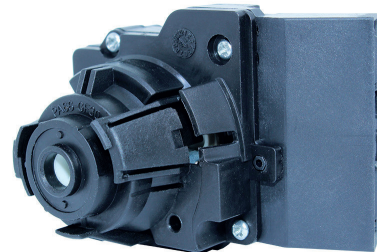
OEM Part number:

Aplicação: **VOLKSWAGEN**

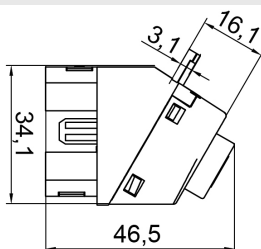
Application



- Polo
- Fox
- SpaceFox
- Up 2015 ->
- Virtus 2017 ->



COMUTADOR DE IGNIÇÃO
Ignition Switch



UNIFAP

55.081

Original: 6N0.905865.1

OEM Part number:

Aplicação: **VOLKSWAGEN/SEAT**

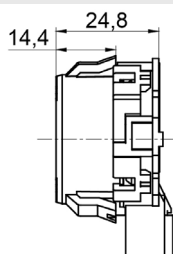
Application



- Polo 1996-2001
- Golf <- 1998
- Furgonete Van 1998 ->
- Passat
- Variant 1994-1997
- Cordoba
- Ibiza 1995 ->



COMUTADOR DE IGNIÇÃO
Ignition Switch



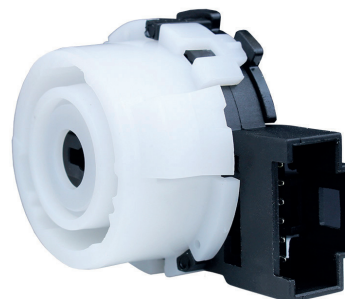
UNIFAP
55.084

Original: 1KO.905865.A
OEM Part number:

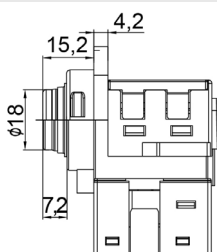
Aplicação: **VOLKSWAGEN**
Application



- Jetta
- Tiguan
- Novo Fusca



COMUTADOR DE IGNIÇÃO
Ignition Switch



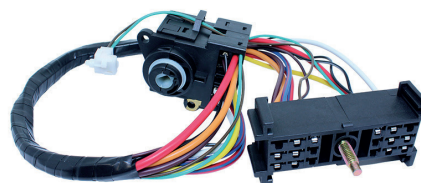
UNIFAP
55.026

Original: 93364302
OEM Part number:

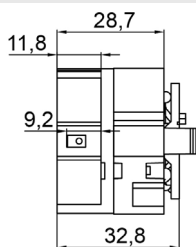
Aplicação: **CHEVROLET**
Application



- S10
- Blazer
- Silverado
- Pickup 3500H
- Caminhão.6-100/6-150



COMUTADOR DE IGNIÇÃO
Ignition Switch



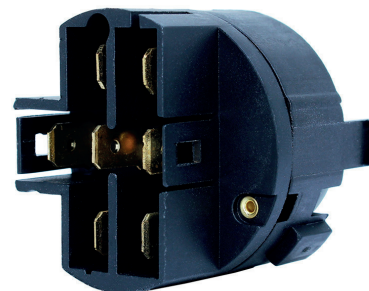
UNIFAP
55.045

Original: 5888983
OEM Part number:

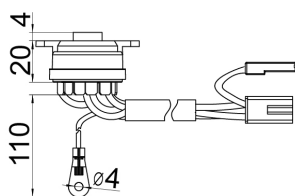
Aplicação: **FIAT**
Application



- Uno
- Prêmio
- Elba
- Boxer
- Fiorino <- 2003
- Ducato <- 2005



COMUTADOR DE IGNIÇÃO
Ignition Switch



UNIFAP
55.015

Original: BE2M.11572.A
OEM Part number:

Aplicação: **FORD**
Application



- Corcel
- Belina
- Caminhões 1985



COMUTADOR DE IGNIÇÃO
Ignition Switch



UNIFAP
55.017

Original: C5AB.11572.C
OEM Part number:

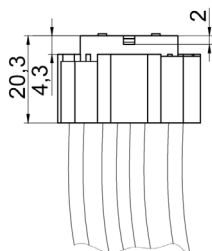
Aplicação: **FORD**
Application



- Pick-ups 1972-1984
- Caminhões 1972-1984



COMUTADOR DE IGNIÇÃO
Ignition Switch



UNIFAP
55.108

Original: 29.925.51 - CE
OEM Part number:

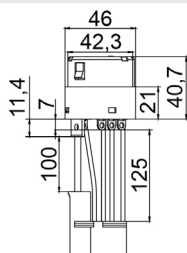
Aplicação: **IVECO**
Application



- Daily 2008 ->



COMUTADOR DE IGNIÇÃO
Ignition Switch



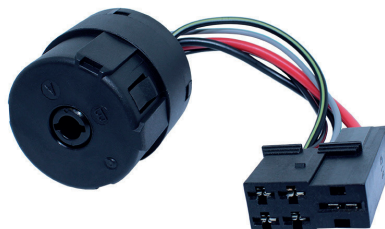
UNIFAP
55.028

Original: A.000.545.81.08
OEM Part number:

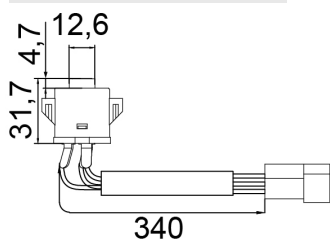
Aplicação: **MERCEDES BENZ**
Application



- Sprinter



COMUTADOR DE IGNIÇÃO
Ignition Switch



UNIFAP
55.058

Original: 631.545.00.13
OEM Part number:

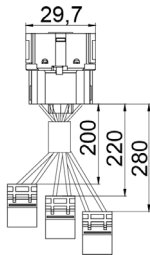
Aplicação: **MERCEDES BENZ**
Application



- Furgão



COMUTADOR DE IGNIÇÃO
Ignition Switch



UNIFAP

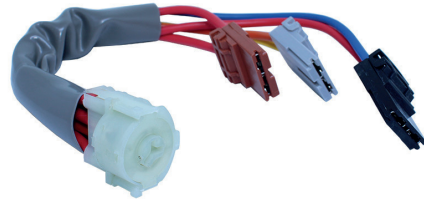
55.068

Original: 400-9000B, 4162.AP
OEM Part number:

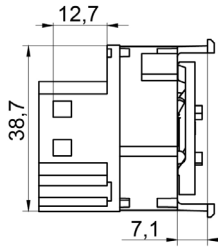
Aplicação: **PEUGEOT**

Application

- Furgão



COMUTADOR DE IGNIÇÃO
Ignition Switch



UNIFAP

55.102

Original: 1329316080
OEM Part number:

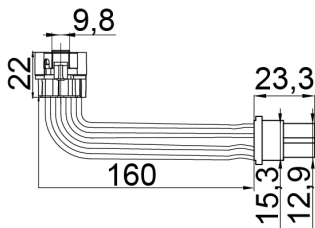
Aplicação: **PEUGEOT, CITROEN, FIAT**

Application

- Boxer 2006 ->
- Jumper
- Ducato



COMUTADOR DE IGNIÇÃO
Ignition Switch



UNIFAP

55.063

Original: 7702073688
OEM Part number:

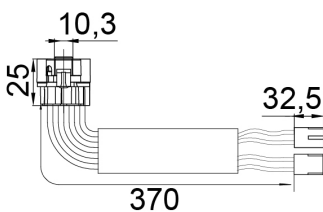
Aplicação: **RENAULT**

Application

- Trafic



COMUTADOR DE IGNIÇÃO
Ignition Switch



UNIFAP

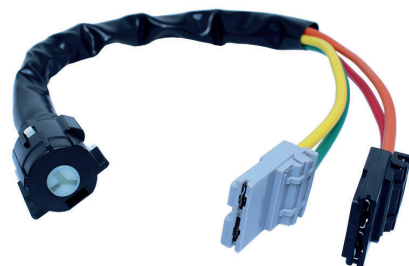
55.064

Original: 41022
OEM Part number:

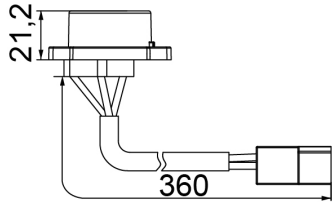
Aplicação: **RENAULT**

Application

- Kangoo



COMUTADOR DE IGNIÇÃO
Ignition Switch

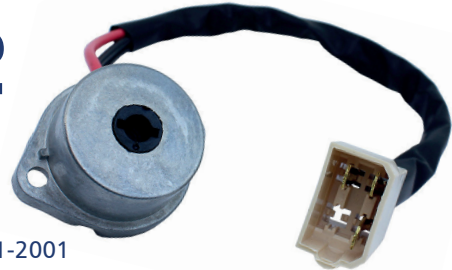


UNIFAP
55.032

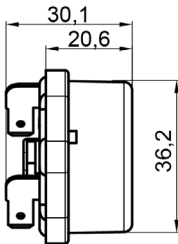
Original: 45280-98000
OEM Part number:

Aplicação: **TOYOTA**
Application

- Bandeirante 1961-2001



COMUTADOR DE IGNIÇÃO
Ignition Switch



UNIFAP
55.023

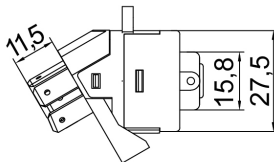
Original: 211.905865.3
OEM Part number:

Aplicação: **VOLKSWAGEN**
Application

- Kombi 1975-1997



COMUTADOR DE IGNIÇÃO
Ignition Switch



UNIFAP
55.033

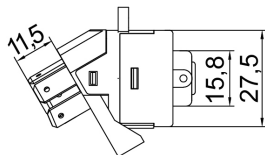
Original: 307.905865.1,
OEM Part number: 88EU.11572.A.B1

Aplicação: **VOLKSWAGEN/FORD**
Application

- Caminhões 2003-2005
- Caminhões 1991
- Caminhões 1987-2005
- Ônibus 1991-2005
- Gol
- Parati
- Saveiro
- Kombi 1997
- Santana
- Quantun 1997
- Voyage 1987-1995
- Royale 1993
- F-1000
- F-4000
- F-12000
- F-14000 1992-1998



COMUTADOR DE IGNIÇÃO
Ignition Switch

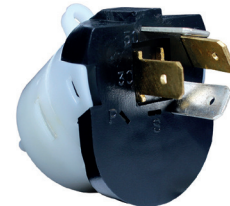


UNIFAP
55.047

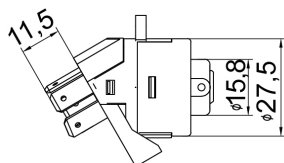
Original: 1 111.905.865,
OEM Part number: 307.905865.1, 88EU.11572.A.B1

Aplicação: **VOLKSWAGEN/FORD**
Application

- Caminhões 1987-2005
- Ônibus 1991-2005
- Voyage 1987-1995
- Quantun 1997
- Parati
- Kombi 1997
- Santana
- Versailles
- Royale 1993
- F-1000
- F-4000
- F-12000
- F-14000 1992-1998



COMUTADOR DE IGNIÇÃO
Ignition Switch



UNIFAP
55.052

Original: 307.905865.2
OEM Part number:

Aplicação: **VOLKSWAGEN**
Application

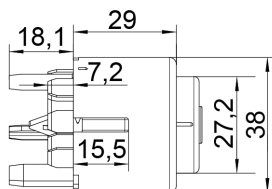


- Voyage 1987-1995
- Quantum 1998 ->
- Santana



- Gol
- Parati
- Saveiro
- Ônibus
- Micro 2005 ->
- Caminhões delivery/ leves/electronics

COMUTADOR DE IGNIÇÃO
Ignition Switch



UNIFAP
55.074

Original: 4B0.905849
OEM Part number:

Aplicação: **VOLKSWAGEN/AUDI**
Application

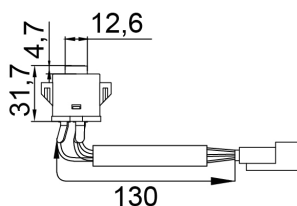


- Fox
- SpaceFox 2003 ->
- Gol geração V



- Voyage
- Passat
- New Beetle
- Golf 2008 ->
- Bora 2000 ->
- Variant 1998-2005
- Parati 2008 ->
- Polo sedan/hatch 2002 ->
- Constellation
- A3 1999-2006

COMUTADOR DE IGNIÇÃO
Ignition Switch



UNIFAP
55.027

Original: A.979.540.00.78
OEM Part number:

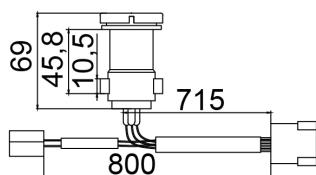
Aplicação: **MERCEDES BENZ**
Application



- Accelo 815, 915c, 1016



COMUTADOR DE IGNIÇÃO
Ignition Switch



UNIFAP
55.036

Original: 000.545.54.13
OEM Part number:

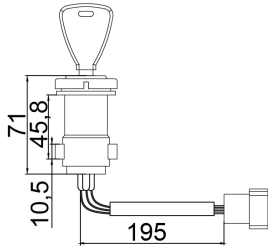
Aplicação: **MERCEDES BENZ**
Application



- Ônibus 1986-1995



COMUTADOR DE IGNIÇÃO
Ignition Switch



UNIFAP
55.038

Original: 345.545.73.13
OEM Part number:

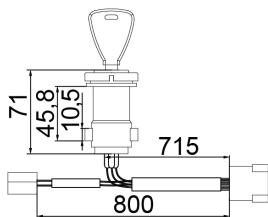
Aplicação: **MERCEDES BENZ**
Application



- Caminhões 1986-1995



COMUTADOR DE IGNIÇÃO
Ignition Switch



UNIFAP
55.039

Original: 688.545.70.13
OEM Part number:

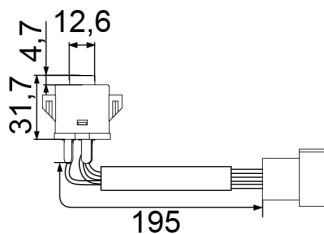
Aplicação: **MERCEDES BENZ**
Application



- Ônibus 1986-1995



COMUTADOR DE IGNIÇÃO
Ignition Switch



UNIFAP
55.043

Original: 000.545.58.13
OEM Part number:

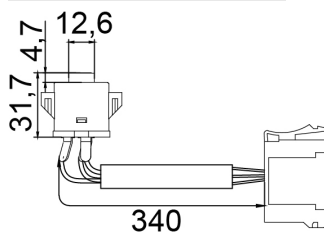
Aplicação: **MERCEDES BENZ**
Application



- Caminhões 1986-1995



COMUTADOR DE IGNIÇÃO
Ignition Switch



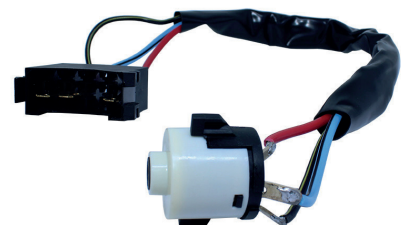
UNIFAP
55.049

Original: A.688.545.70.13
OEM Part number:

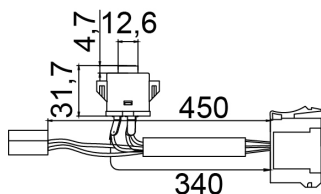
Aplicação: **MERCEDES BENZ**
Application



- Caminhões 1995 ->



COMUTADOR DE IGNIÇÃO
Ignition Switch



UNIFAP
55.050

Original: A.000.545.58.13
OEM Part number:

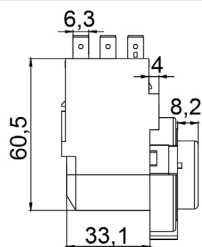
Aplicação: **MERCEDES BENZ**

Application

- Ônibus 1995 ->



COMUTADOR DE IGNIÇÃO
Ignition Switch



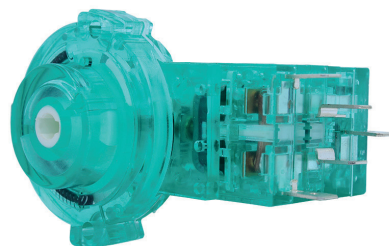
UNIFAP
55.083

Original: 000.545.95.08
OEM Part number:

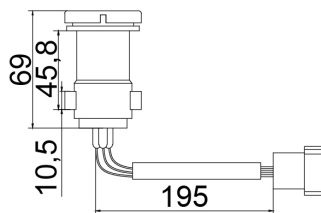
Aplicação: **MERCEDES BENZ**

Application

- Axor
- Atego
- Actros



COMUTADOR DE IGNIÇÃO
Ignition Switch



UNIFAP
55.103

Original: A.345.545.72.13
OEM Part number:

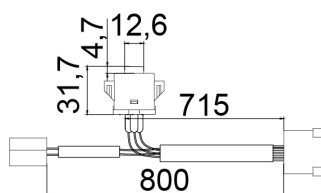
Aplicação: **MERCEDES BENZ**

Application

- Caminhões 1988-1995



COMUTADOR DE IGNIÇÃO
Ignition Switch



UNIFAP
55.104

Original: A.000.545.54.13
OEM Part number:

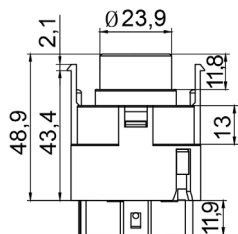
Aplicação: **MERCEDES BENZ**

Application

- Ônibus 1988 ->
- Caminhões 1988 ->



COMUTADOR DE IGNIÇÃO
Ignition Switch



UNIFAP

55.024

Original: 9401107

OEM Part number:

Aplicação: **SCANIA**

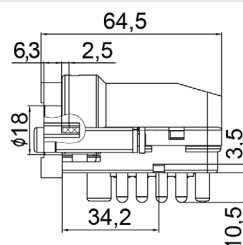
Application



- Caminhões 112 1981-1998
- Caminhões 142 1981-1998



COMUTADOR DE IGNIÇÃO
Ignition Switch



UNIFAP

55.025

Original: 1425019

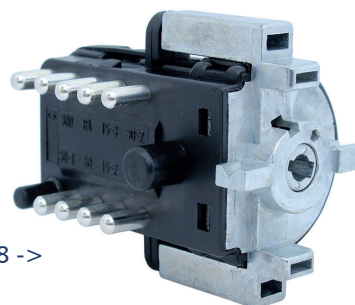
OEM Part number:

Aplicação: **SCANIA**

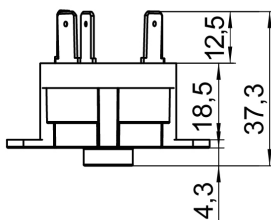
Application



- Caminhões 114/124 1998 ->
- Ônibus 114/124 1998 ->



COMUTADOR DE IGNIÇÃO
Ignition Switch



UNIFAP

55.031

Original: 537326

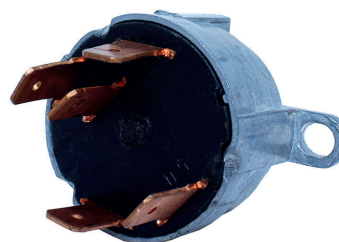
OEM Part number:

Aplicação: **SCANIA**

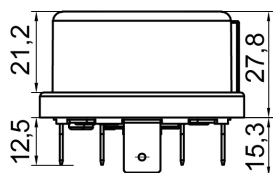
Application



- Caminhões 111/141 1976-1981



COMUTADOR DE IGNIÇÃO
Ignition Switch



UNIFAP

55.034

Original: 2RP.905865

OEM Part number:

Aplicação: **VOLKSWAGEN/FORD**

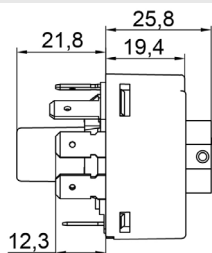
Application



- Ônibus 16-180, 16-210
- Cargo



COMUTADOR DE IGNIÇÃO
Ignition Switch



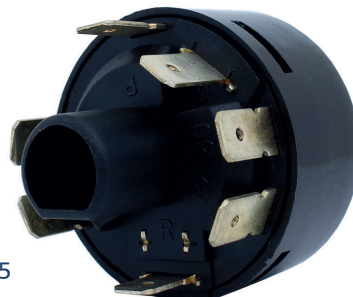
UNIFAP
55.020

Original: 1626372
OEM Part number:

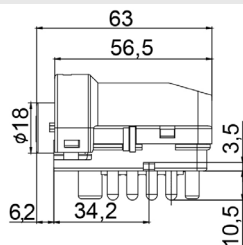
Aplicação: **VOLVO**
Application



- Caminhões NL 1989-1995



COMUTADOR DE IGNIÇÃO
Ignition Switch



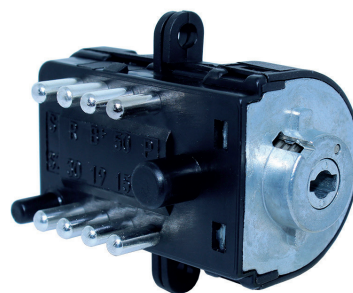
UNIFAP
55.022

Original: 8159904
OEM Part number:

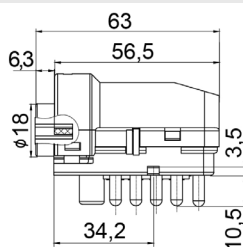
Aplicação: **VOLVO**
Application



- Caminhões NL 1996 ->



COMUTADOR DE IGNIÇÃO
Ignition Switch



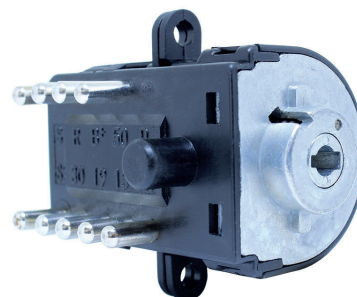
UNIFAP
55.078

Original: 3197718
OEM Part number:

Aplicação: **VOLVO**
Application



- FH
- FM
- NH





CONTATOS COMERCIAIS *COMMERCIAL CONTACTS*

Gerência Comercial - Reposição Brasil *Commercial Management - Replacement Brazil*

sergio@unifap.com.br (47) 99642-3232
comercial@unifap.com.br (47) 3332-8383

Scaneie o QR CODE
e faça contato com
Representante
de sua região.



Vendas Internacionais / Export *International Sales / Export*

export@unifap.com.br +55 (47) 3332-8383



2024

COMUTADORES
DE IGNIÇÃO
Ignition Switches



UNIFAP INDÚSTRIA E COMÉRCIO DE AUTO PEÇAS LTDA
Rua João Barbieri, 605 - Bairro Barracão
Gaspar - SC, Brasil, 89113-334

Fone: +55 47 3332 8383



Suporte Técnico: +55 47 9 9927 9606
Tech. Support

QR Code para WhatsApp



f @ unifapind

✉ unifap@unifap.com.br

🌐 UNIFAP.com.br